

Chetwynd Municipal District | October 19, 2015

# Jackfish Lake Expansion Project

*Stephen Kurbis, Director, Transmission North*  
*Talese Shilleto, Community Coordinator*  
*Glenn Auger, Community Coordinator*





# Agenda

---

**Spectra Energy in British Columbia**

---

**Jackfish Lake Expansion Project**

---

**Other Projects**

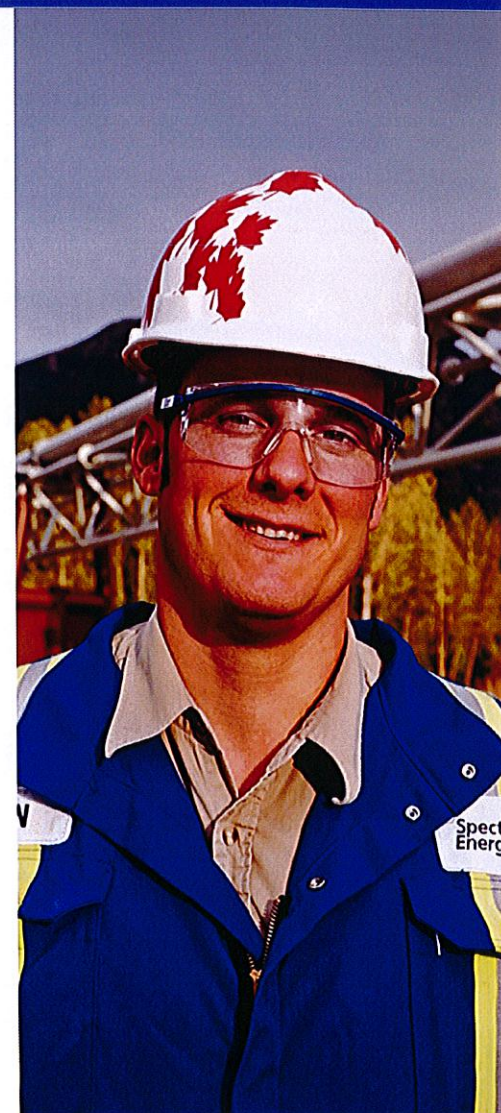
---

**Commitment to Community & Safety**

---

**Q&A**

---

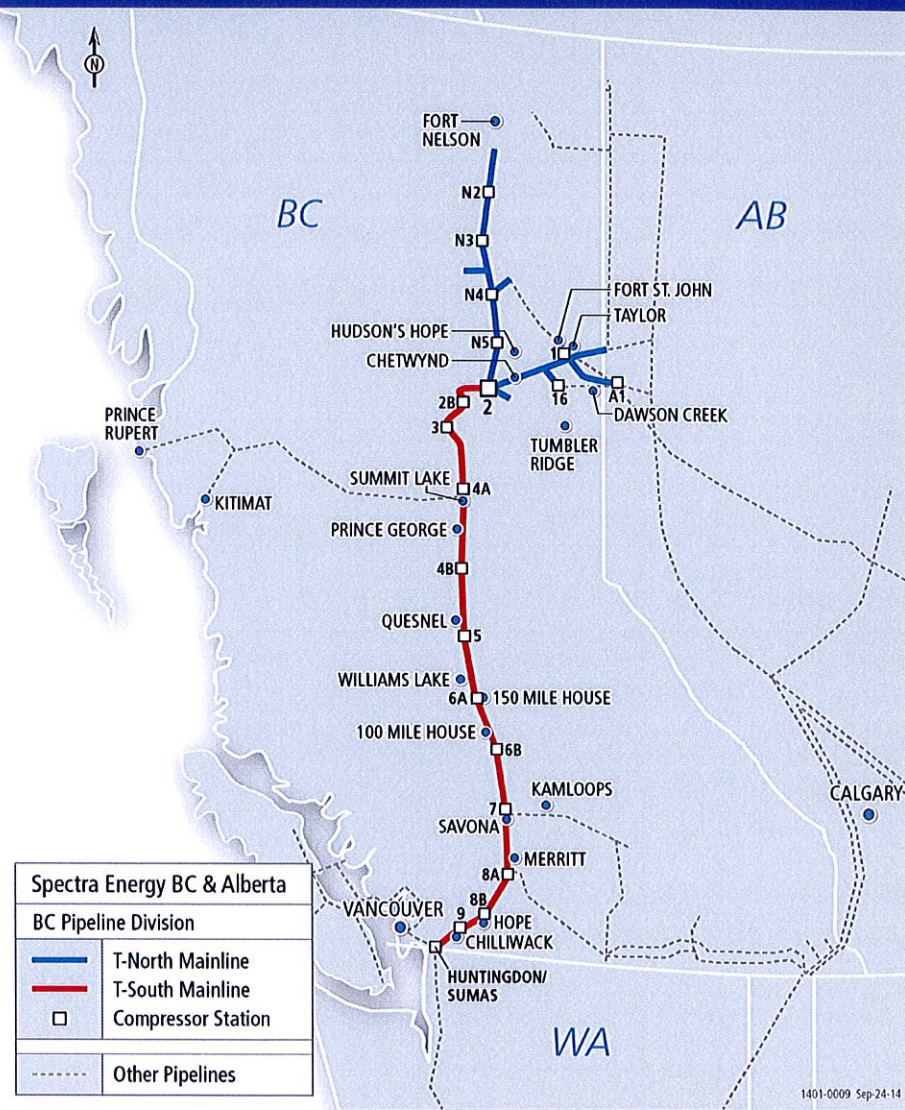




# Spectra Energy in British Columbia

- Owns and operates B.C.'s major natural gas transmission system
- Transports processed natural gas throughout B.C., Alberta and into the U.S. Pacific Northwest
- This gas is used for:
  - Heating homes, businesses, schools and hospitals
  - Electric power generation
  - Industrial and manufacturing processes

Today, ~55% of the gas produced in B.C. touches Spectra Energy's transmission system





# Spectra Energy in B.C.

*Nearly 60 years of experience in safely, reliably and responsibly constructing and operating natural gas gathering, processing and transportation facilities*

## Western Canadian Operational Snapshot

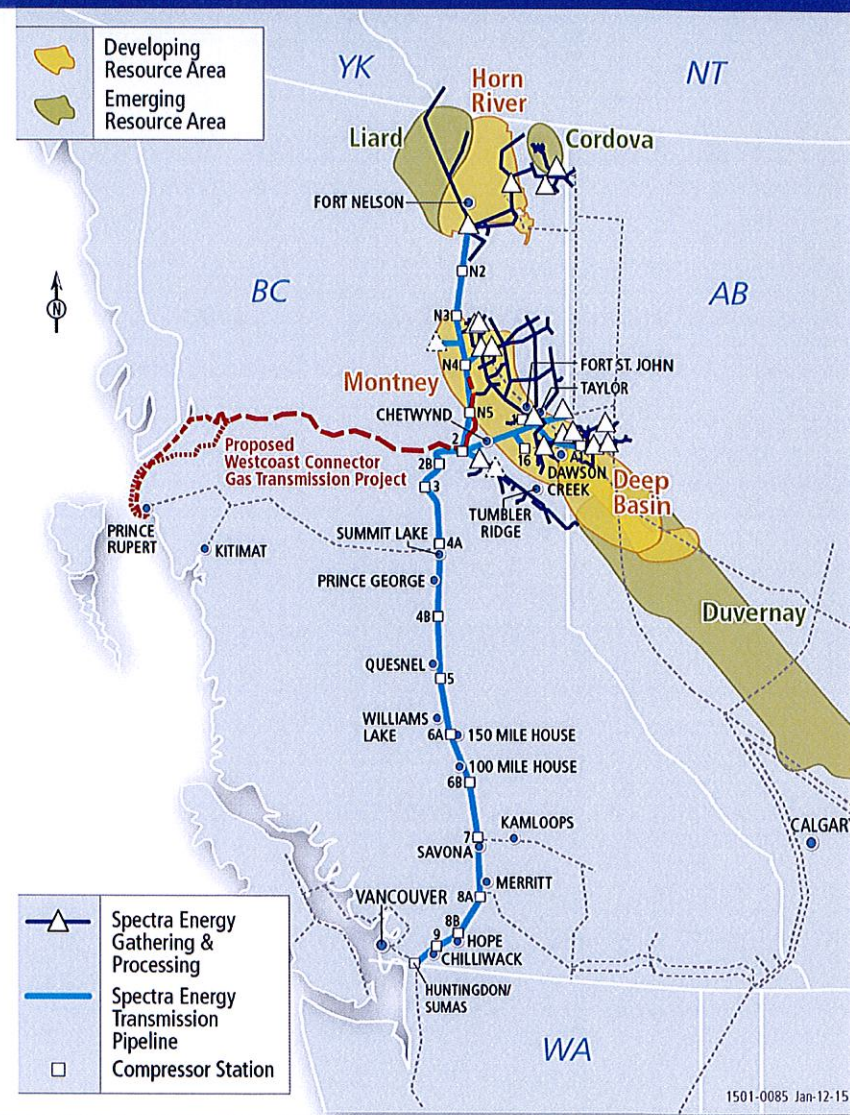
### Gathering and Processing

Plants:	19
Capacity:	3.7 Bcf/d
Gathering Pipeline:	3,500 km

### BC Pipeline

Pipeline:	2,900 km
Capacity:	2.9 Bcf/d

Today, ~70 per cent of the gas produced in B.C. touches Spectra Energy's gathering, processing and transmission system





# Jackfish Lake Expansion Project



# Jackfish Lake Expansion Project

## Purpose:

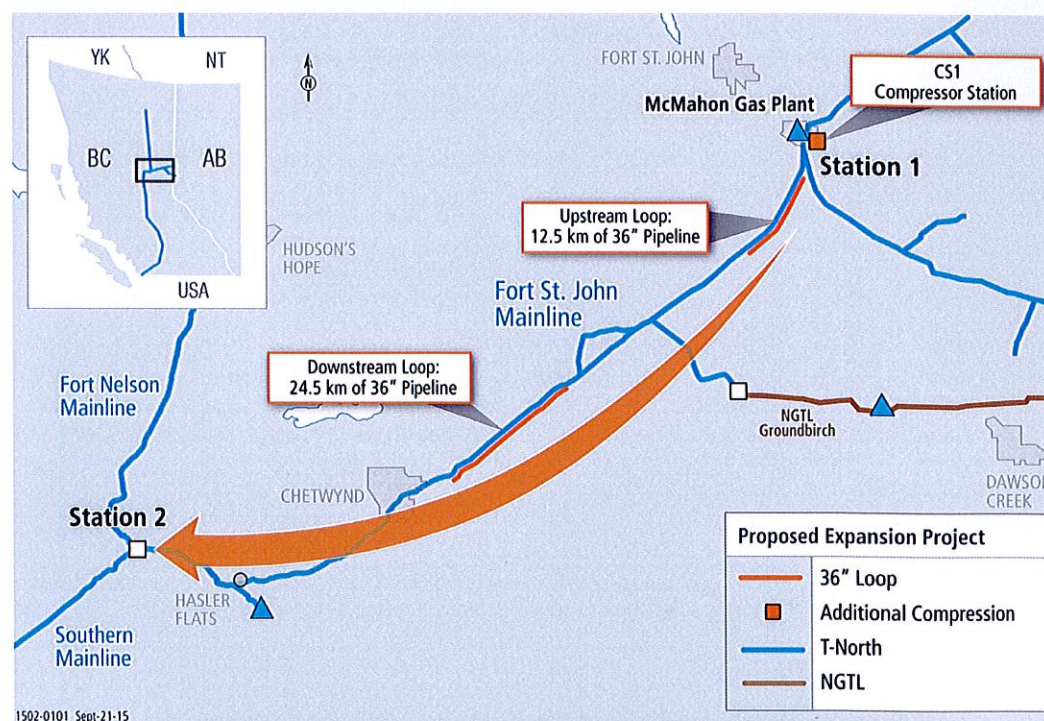
- Expand the natural gas transmission system from Taylor to Chetwynd
- Accommodate customer demand in a safe and reliable way

## Project Scope:

- Add two 36-inch pipeline loops
- Add a new compressor unit to Compressor Station 1 to accommodate increased volumes of natural gas
- Modifications to Compressor Station 1 and Compressor Station 2
- Pipeline tie-ins
- Incremental transportation capacity: ~137.5 MMcf/d

## Project Status:

- Work planned for 2015 and 2016
- Targeted in-service date early 2017



**Both pipeline loops will run largely parallel to the existing pipeline system**



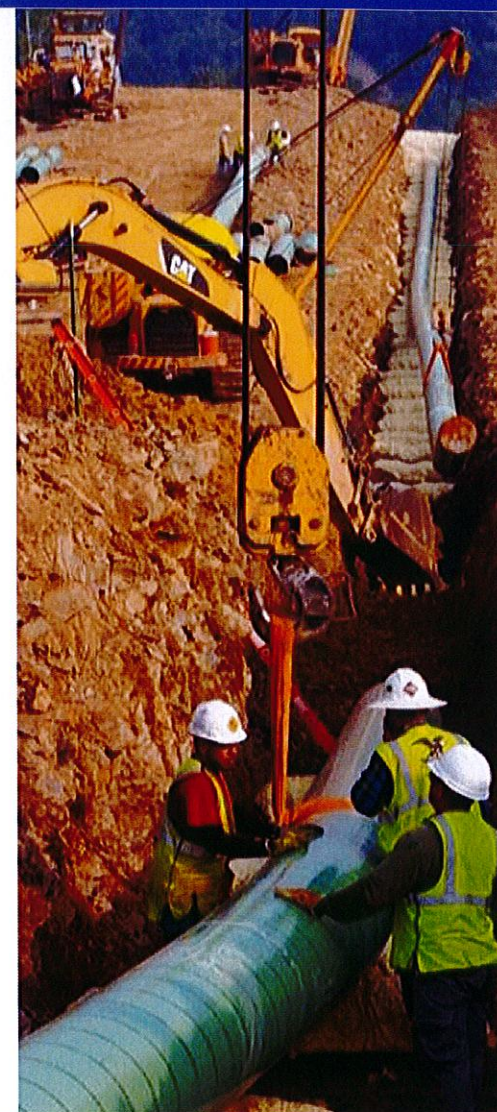
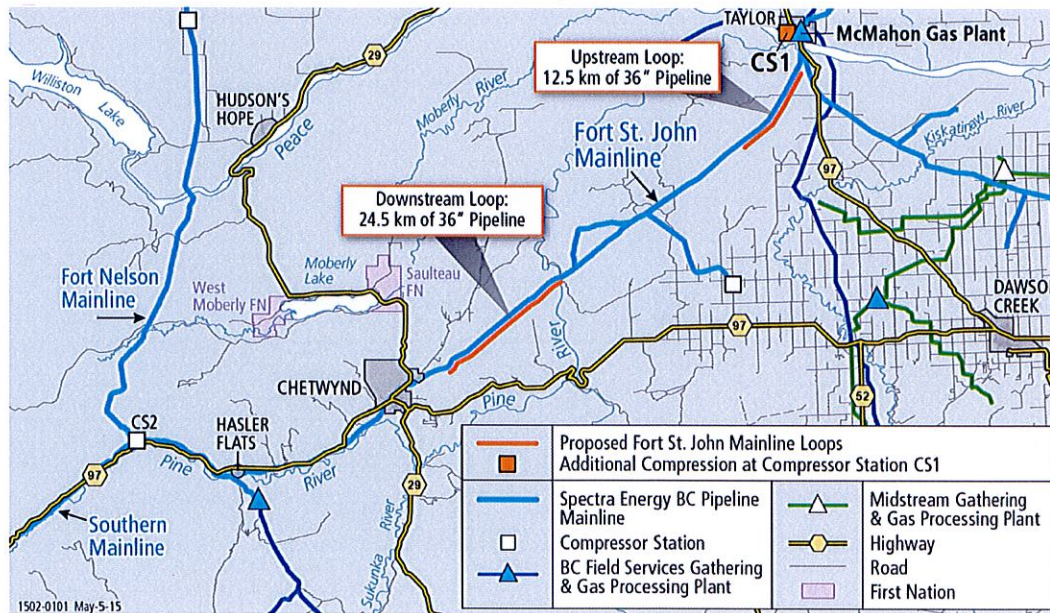
# Pipeline Loops

## Loop 1:

- Starts south of Taylor, on the south side of the Peace River
- Travels south for ~12.5 km

## Loop 2:

- Starts at the west bank of the Pine River
- Extends ~24.5 km towards Chetwynd





# Compressor Unit Addition

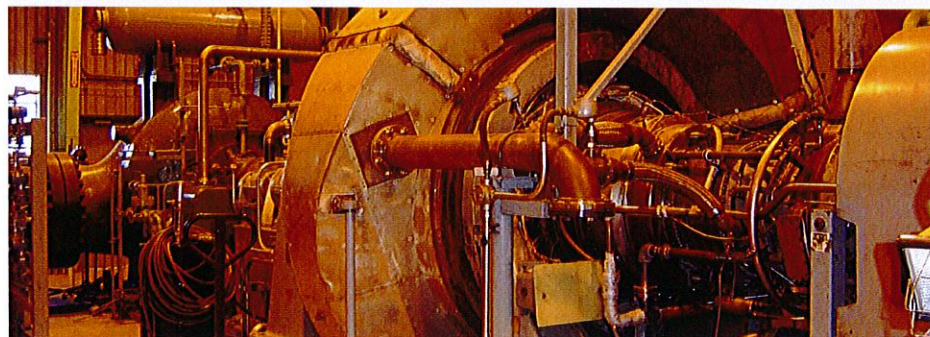
## Scope:

- Adding a new compressor unit at Compressor Station 1 next to the McMahon Gas Plant in Taylor
- This unit will be state-of-the-art technology
  - Meet new lower regulatory and environmental emission requirements
  - Result in no additional impacts on the air shed in the area
  - Retrofits will be made to existing compressor units at this facility to lower emissions

## Timeline:

- Unit installation completed mid-to-late 2016
- In-service scheduled for early 2017

**Spectra Energy continuously looks for ways to decrease its environmental footprint**





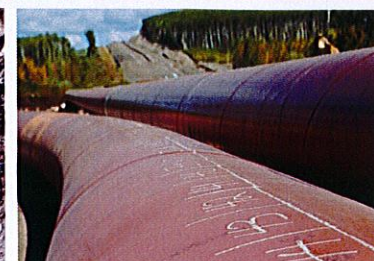
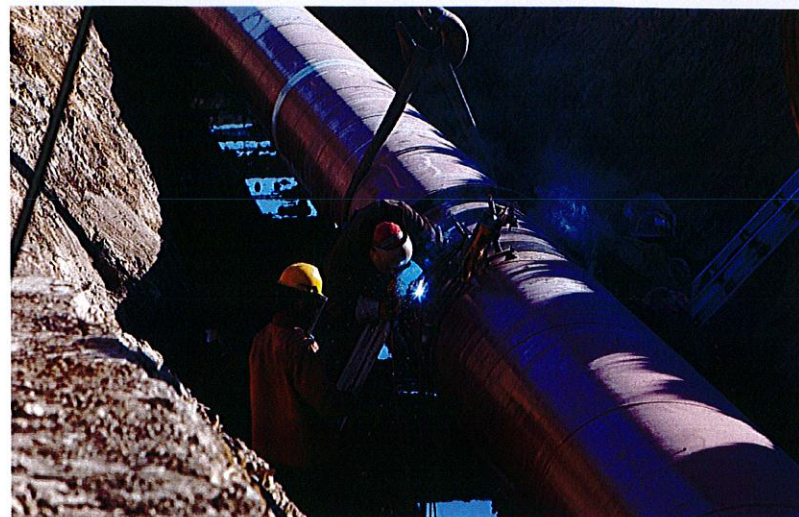
# Project Benefits

## Workforce Estimates

- Construction completed in about 7 months
  - 50 workers needed at project onset
  - 400 workers at project peak for about 1 month
  - Worker schedule: 12 days on/ 2 days off
- No work camps

## Socio-economic Impacts

- Workers will use Chetwynd-area hotels and motels during construction of the downstream loop
- Peak construction activities will be timed to correspond with low occupancy periods
- Source local labour and expertise
- Encourage the use of local businesses



**Local businesses and accommodation will be used for the duration of the project**



## Other Projects



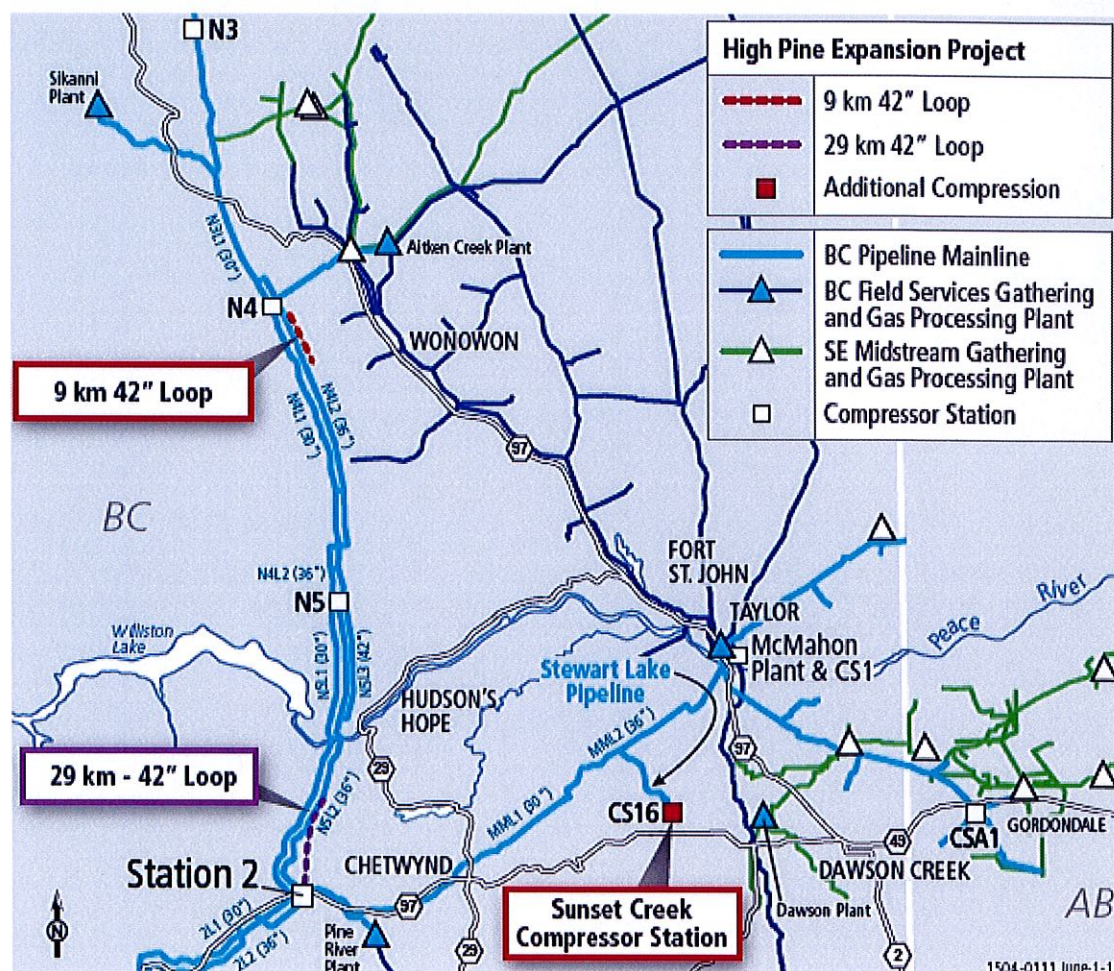
# High Pine Expansion Project

## Project Scope:

- Adding two 42-inch pipeline loops
- Adding a new compressor unit to the Sunset Creek Compressor Station
- Modifications to existing compressor stations
- Incremental transportation capacity: ~240 MMcf/d

## Project Status:

- Work planned for 2016
- Targeted in-service date end of 2016





# High Pine Expansion Project

## Workforce Update

- It is anticipated that most of the construction workforce will be hired out of Fort St. John and Chetwynd areas
- 50 workers will be needed at the onset of pipeline construction
- 400 workers may be needed for a peak period of 1 month during pipeline construction
- Worker schedule: 12-hour days, 6 days on/ 1 day off

## Proposed Construction Timetable

### Upstream Loop

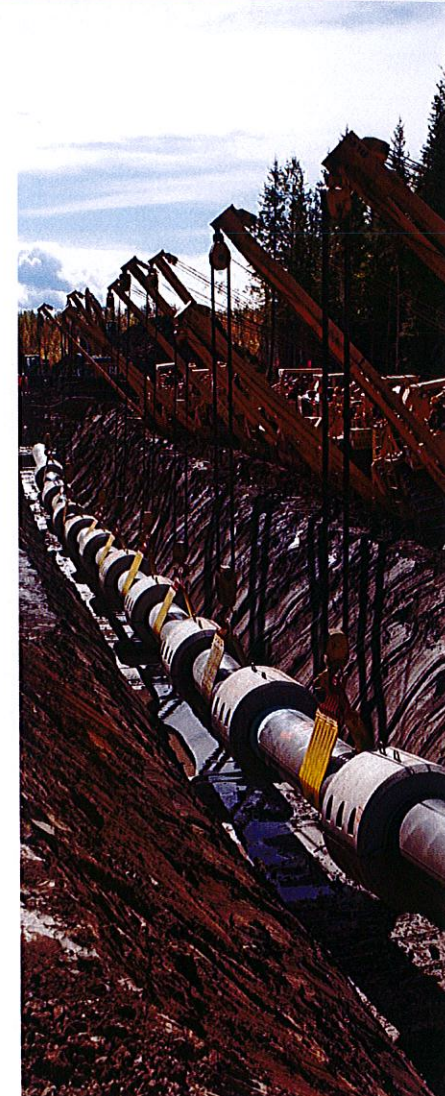
- Workers will use an existing work camp in the area for accommodation
- Construction schedule: May – Aug 2016

### Down Stream Loop

- Workers will use Chetwynd area hotels and motels for accommodation
- Construction schedule: July – Oct 2016

### Facility Work

- Construction schedule: May – Oct 2016
- 60 workers will likely be needed throughout the duration of the work
- 100 workers may be needed for a peak period of 1 month





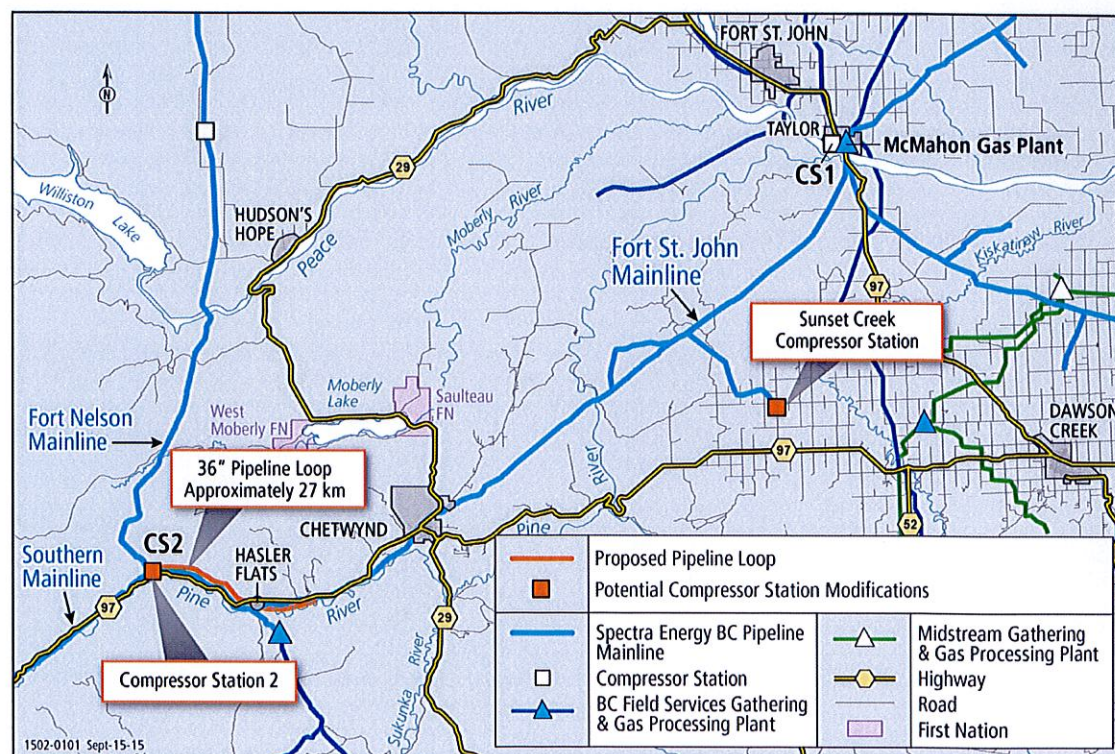
# Wyndwood Pipeline Expansion Project

## Proposed Project Scope:

- Adding a 36-inch pipeline loop
- The loop will be ~27 km in length
- Modifications to an existing compressor station
- Up to ~50 MMcf/d added transportation capacity

## Project Status:

- Finalizing project scope
- Tentative in-service late 2017





## Commitment to Community & Safety



## Commitment to Community & Safety

*Safety is our highest priority. All of our projects are focused on protecting the public, the environment and local property, while maintaining a safe, efficient and reliable pipeline system.*

### Engagement Areas

- Meet with interested parties and groups to discuss project specifics
- Discuss pipeline staging areas
- Traffic management plans to minimize local disruptions
- Consult with First Nations on the project and pipeline routing
- Follow *all* prescribed environmental protection measures
- Be a partner of choice







# Q&A

**SE**  
**LISTED**  
**NYSE**

**SEP**  
**LISTED**  
**NYSE.**

MEMBER OF  
**Dow Jones**  
**Sustainability Indices**  
In Collaboration with RobecoSAM

